

88 5536 17

City Chic

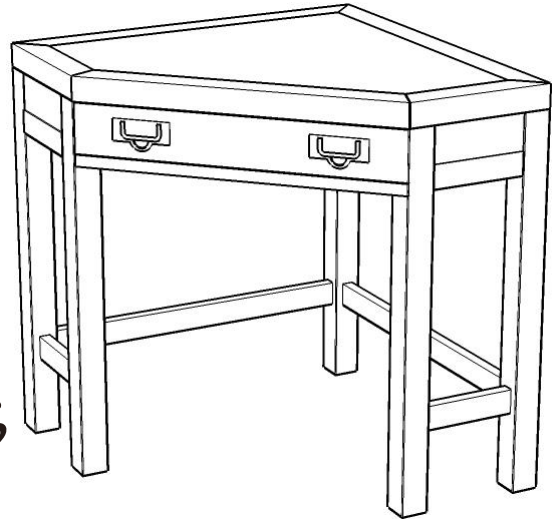
Corner Lap Top Desk

IMPORTANT NOTE

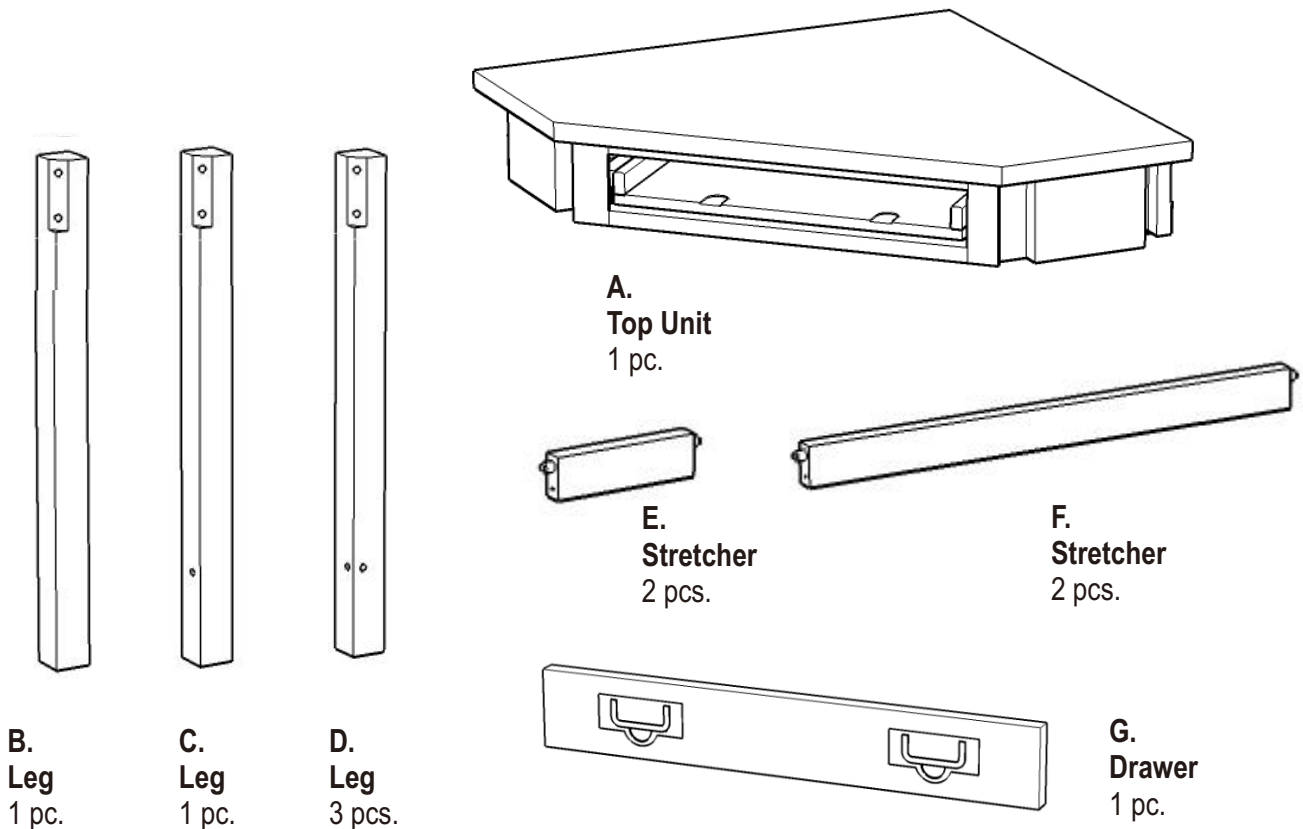
Carefully remove all the parts from the carton and put them individually on a soft cloth to prevent scratches or other damages occurring to the wood parts.

We have taken great care in the design of this product and request that you carefully and strictly follow our assembly instructions to ensure a completed product as it was designed.

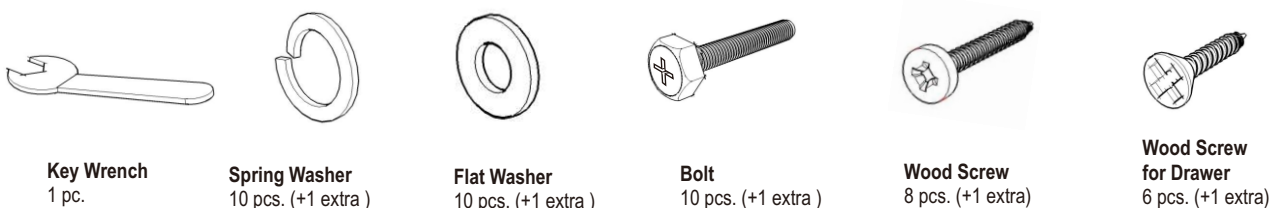
Home Styles



PART LIST



HARDWARE LIST



Tools required for assembly : Phillips screwdriver

Tools recommended for assembly : Level

Home Styles Consumer Assistance: www.homestyles-furniture.com,
servicedesk@homestyles-furniture.com, 888-680-7460, 877-831-0319

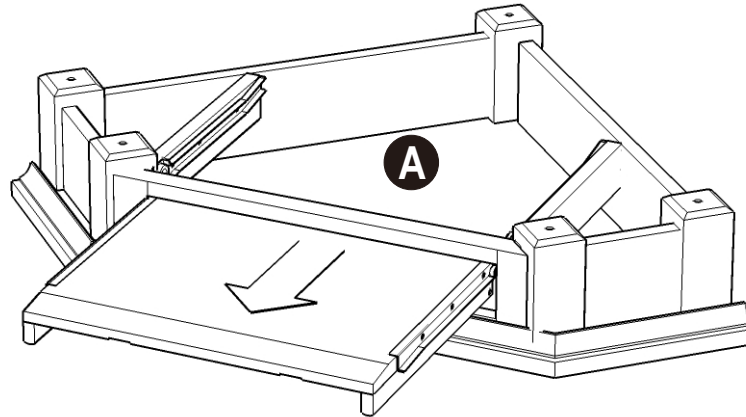
IMPORTANT

Do not tighten up all the screws until each part is properly assembled. You should keep Key Wrench in a safe place as you may need to tighten up the Head Cap Bolts in the future.

STEP 1

Turn Top (A) upside down and place it on a soft cloth.

Remove the drawer.



STEP 2

Attach Legs (B), (C) and (D) to Top (A) with Flat Washers, Spring Washers and Bolts, then tighten the bolts half way (see Figure 1).

Attach Stretcher (E) and (F) to the unit with Wood Screws.

Tighten up all bolts.

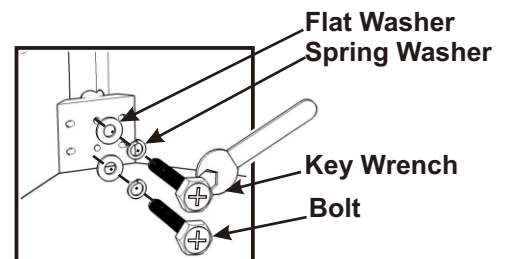
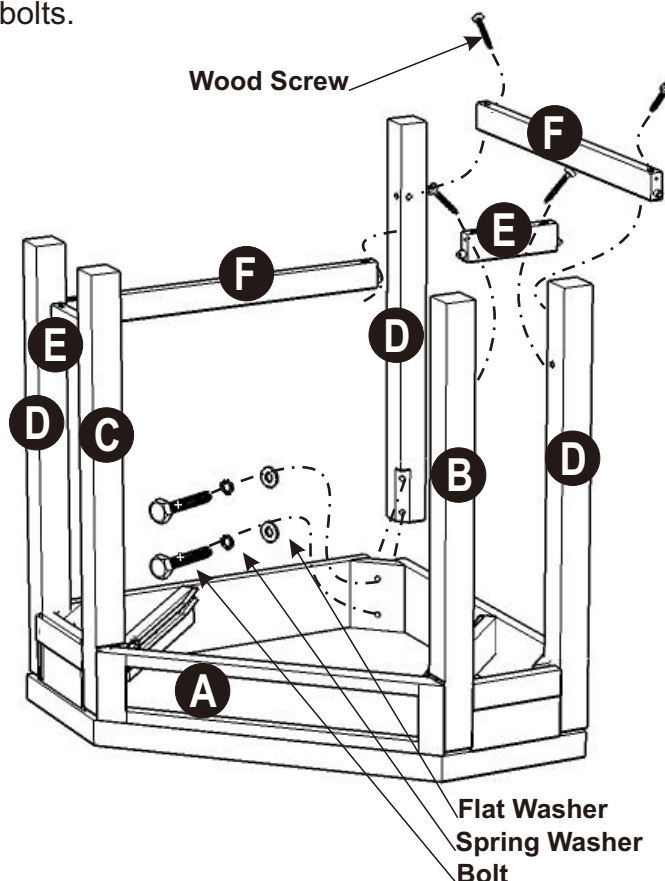
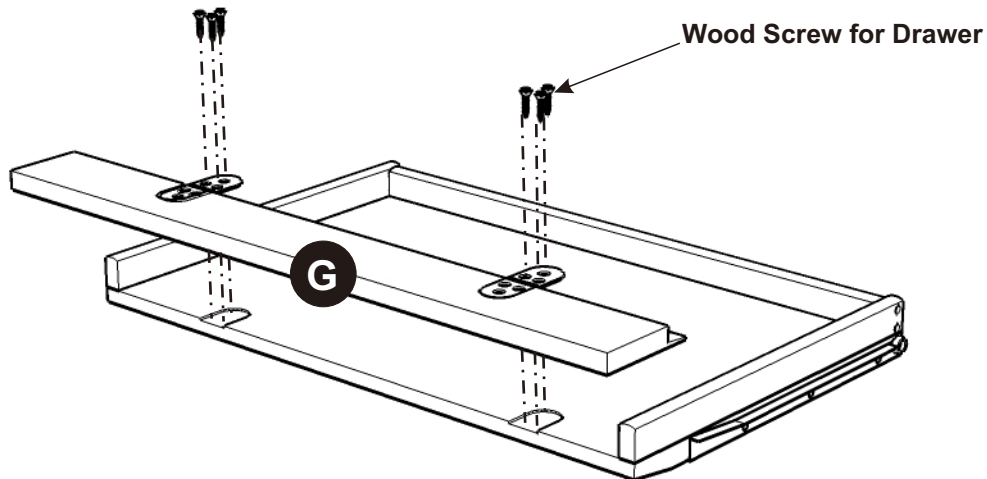


Figure 1

STEP 3

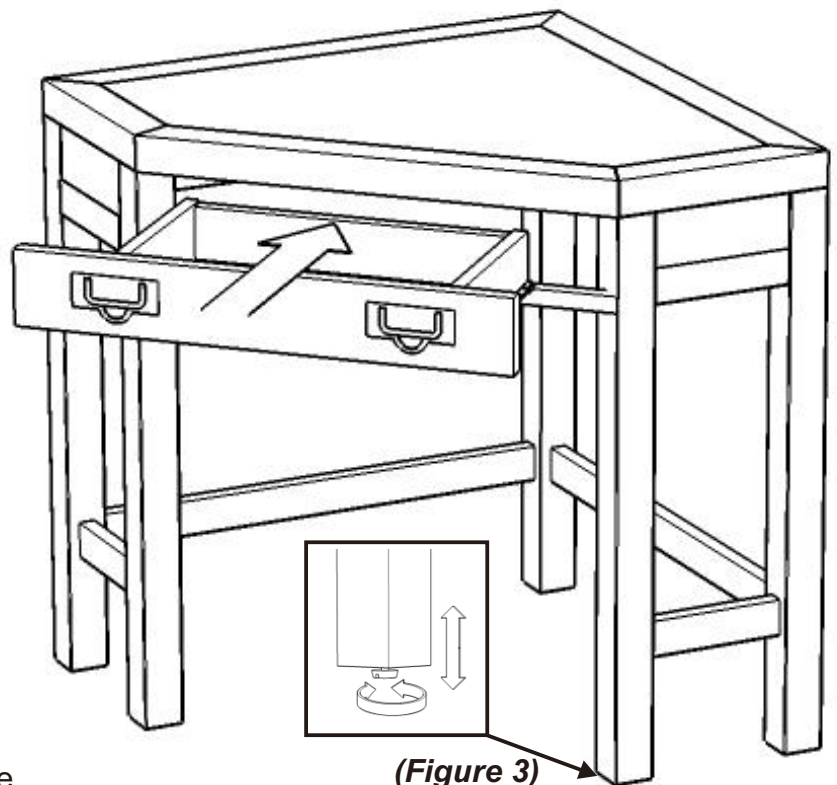
Attach Drawer (G) to Drawer with Wood Screws for Drawer.



STEP 4

Turn the unit over to its' upright position.

Slide the drawers into position.



STEP 5

To level the unit, adjust the adjustable levelers on the bottom of unit. (see Figure 3)

Note : Unit must be level to work properly.